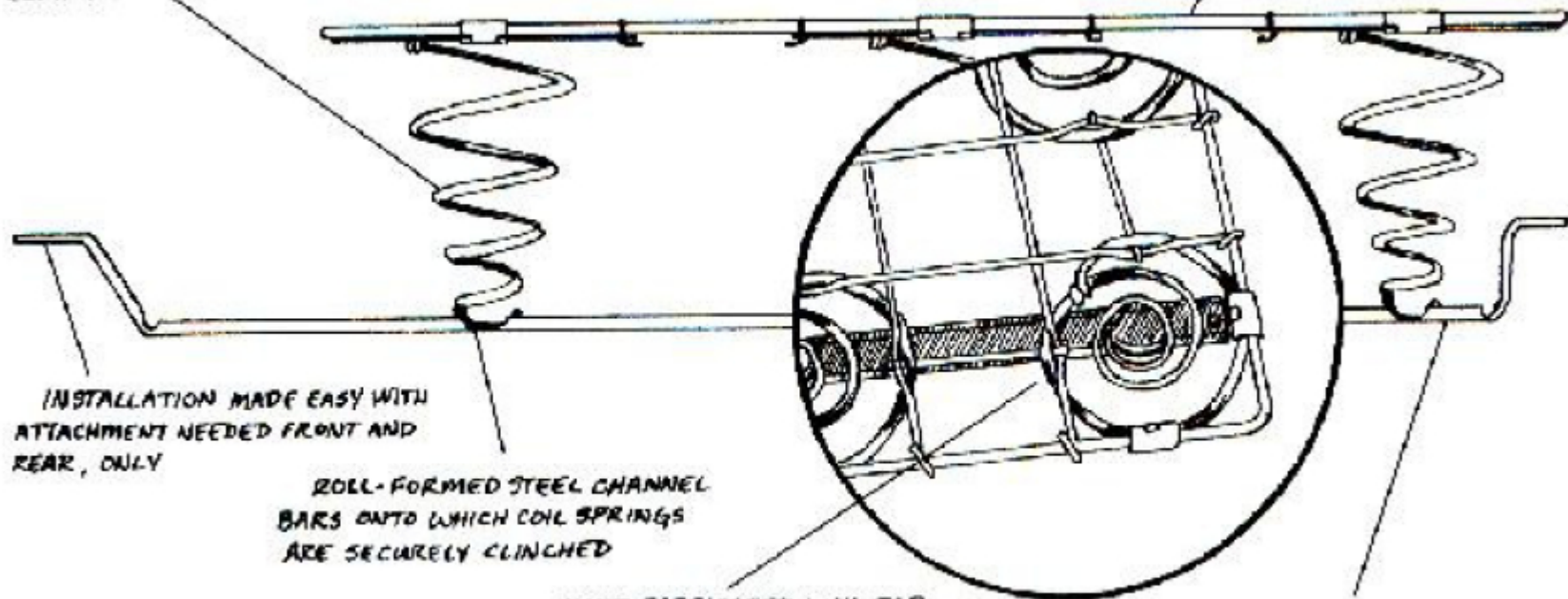


COIL SPRINGS MADE FROM HIGH CARBON SPRING WIRE ARE HEAT TEMPERED AND DESIGNED TO MEET THE CUSTOMER'S DEMAND FOR SEATING COMFORT

ASSEMBLY SIZE DESIGNED TO MATCH THE CUSTOMER'S FRAME



INSTALLATION MADE EASY WITH ATTACHMENT NEEDED FRONT AND REAR, ONLY

ROLL-FORMED STEEL CHANNEL BARS ONTO WHICH COIL SPRINGS ARE SECURELY CLINCHED

HAND FABRICATED LINK-TOP ASSEMBLY DISTRIBUTES WEIGHT EVENLY AND SMOOTHLY

STEEL BARS CAN BE VARIED IN LENGTH TO MEET THE DEMENSIONS OF THE FURNITURE FRAME